

# B90 Safety Guard

Instructions for installation and operation

### **Manufacturer and contact address**

Meyer BlechTechnik AG  
Schutztechnik  
Feldstrasse 30  
CH-6022 Grosswangen

Tel. +41 (0)41 984 16 26

arbeitsschutz@mey-ble.ch  
[www.suvmatic.ch](http://www.suvmatic.ch)

### **Instructions for installation and operation**

#### **B90 Safety Guard**

#### **Original instructions for installation and operation**

#### **Issued by**

Trade and Industry Sector

The information in these installation and operating instructions relate to the B90 Safety Guard and are valid from January 2023.

Keep the installation and operating instructions as well as the assembly drawing in a suitable place where they are accessible at all times. If you lose the instructions, please contact your supplier.

#### **Language version**

These instructions for installation and operation are available in English, German, French and Italian.

### **Obligation to read instructions**

As a user of the safety guard, you have the obligation to read these installation/operating instructions and in particular the chapter entitled "Information for your safety".

### **Copyright**

The contents of this documentation, texts, images, graphics and drawings, are the property of Suva and are subject to copyright. They may not be used, reproduced or distributed without the express written consent of Suva.

<b>1 Important Information</b>	<b>4</b>	<b>4 Cleaning</b>	<b>23</b>
1.1 Introduction	4	4.1 Important notices	23
1.2 Function and structure	4	4.2 Cleaning work	23
1.3 Scope	4		
1.4 Availability	4		
1.5 Obligation to read instructions	5		
1.6 Intended use	5	<b>5 Periodic inspection</b>	<b>24</b>
1.7 Inappropriate use	5	5.1 Important notices	24
1.8 Information for your safety	5	5.2 Inspection intervals	24
1.9 Qualifications of personnel	6		
1.10 Notes on the operating instructions	6		
1.11 Dealing with residual hazards	6		
1.12 Reporting modifications	6		
1.13 Explanations of the danger levels in the warning notice	7	<b>6 Disassembly</b>	<b>25</b>
<b>2 Installation</b>	<b>8</b>	<b>7 Spare parts</b>	<b>26</b>
2.1 Introduction	8	7.1 Accessories	27
2.2 Check the supplied items	8		
2.3 Installation options	8		
2.4 Installing the tubular stand	9		
2.5 Installing the safety guard	10	<b>8 Dimensional drawing</b>	<b>28</b>
2.5.1 Increasing downward pressure	13	8.1 Specifications	29
2.5.2 Setting the height limiter	13		
<b>3 Working with a B90 safety guard</b>	<b>15</b>	<b>EC Declaration of Conformity</b>	<b>30</b>
3.1 Safety information	15		
3.2 Using the safety guard	15		
3.2.1 Setting the riving knife and the safety guard	16		
3.2.2 Replacing the safety guard	18		
3.2.3 Replacing the rails	18		
3.2.4 Replacing the saw blade and the riving knife	19		
3.2.5 Cutting workpieces	20		

# 1 Important Information

## 1.1. Introduction

The B90 safety guard has been developed by accident prevention specialists at Suva and by experts in the construction industry. The B90 is of robust construction and is suitable for outdoor use. The B90 safety guard helps to meet the safety regulations (EN ISO 19085-10:2019) for building site circular saws.

## 1.2 Function and structure

The B90 safety guard has the following features:

- It protects hands from a revolving saw blade.
- It can be adapted to suit workpiece height and lowers itself automatically into the safe position.
- It assists the worker by exerting slight pressure on the workpiece.
- It allows a clear view of the cut. The B90 safety guard is available in two versions:
  - B90, complete standard version excl. dust extraction socket.
  - B90, complete with dust extraction socket (for connection to a dust extraction unit).

The complete B90 safety guard consists of a transparent guard with sliding rails.

The support arm of the guard is attached to the clamping block on the tubular stand via a pivot point.

This design allows the safety guard to be lifted by the workpiece and ensures that it is automatically lowered into the safe position.

The B90 safety guard is also available with a dust extraction socket that allows the guard to be connected to a dust extraction unit.

## 1.3 Scope

The data, instructions and safety-related information contained in this manual apply solely to the handling of the following product:

### **B90 Safety Guard**

The product is built according to the state-of-the-art technology and recognised technical regulations and is subject to the EC Machinery Directive (2006/42/EC). An EC Declaration of Conformity is printed in this manual.

## 1.4 Availability

These instructions must be made available to the qualified persons at the place of use at all times.

## 1.5 Obligation to read instructions

Poor understanding and lack of knowledge of safety rules can lead to dangerous situations.

The instructions must be read and understood before any action is taken with the Suva product.

The installation instructions must be followed when working with the Suva product.

## 1.6 Intended use

The B90 safety guard may only be used on construction-site circular saws with saw blades that cannot be tilted.

The safety guard is designed for saw blade diameters of 500 mm or less.

On models fitted with the dust extraction socket, the minimum airflow at the B90 safety guard extraction dust socket must be at least equal to 20 m/sec to ensure that sawdust and wood chips are extracted satisfactorily.

The intended use of the safety guard also includes compliance to all instructions, regulations and information in these installation and operating instructions.

## 1.7 Inappropriate use

Use of the product outside the aforementioned areas of application or under conditions other than those specified in the documentation is considered to be “not as intended”.

Suva shall not be liable for any damages resulting from such use. The risk shall be borne solely by the operator.



### **DANGER** from inappropriate use of the product

- Personal injury and material damage due to inappropriate use.
- **Do not use** with parts modified by the operator.
- Regular cleaning is essential.
- Use only original spare parts.
- Use only with undamaged and fault-free spare parts.

## 1.8 Notices for your safety

- All safety information in the documentation of the construction-site circular saw and any accessories must be strictly observed.
- Always take note of and adhere to all relevant safety regulations relating to the use of woodworking machinery.
- Always take note of and adhere to all regulations and provisions relating to personal safety equipment and general occupational safety.
- Before any installation or setting-up work is started, the construction-site circular saw must be switched off at the main switch and secured against unintentional operation.
- The B90 safety guard may only be used in safe working order. Operational safety cannot be guaranteed, especially in the following cases:
  - if the safety guard no longer returns to its safe position
  - if the rails are no longer fitted properly to the safety guard (low clamping pressure of the rails)
  - if the rails are badly worn or parts of them have broken off
  - if the guard is damaged (pieces broken off, small cracks, opacity, etc.)

## 1.9 Qualification of personnel

The operator has to ensure, that only qualified persons are assigned to work on the machine.

Some installation work requires additional work to be done on the construction-site circular saw (hole drilling, welding on a support plate). This work shall only be carried out by qualified specialist. The operator of the construction-site circular saw is responsible for ensuring that only qualified personnel are entrusted with this work.

Personnel undergoing general training may only work on the machine under the constant supervision of an experienced specialist.

Qualified persons are persons who are authorised to carry out the required tasks on the basis of their technical training, experience and knowledge of the relevant standards, regulations, accident prevention regulations and operating conditions. They are able to recognise and avoid possible hazards.



**WARNING**  
Product must not be installed or operated by unqualified personnel

**Installation or operation by unqualified personnel may result in death or serious injury.**

- Use only qualified personnel

## 1.10 Notes on the operating instructions

These instructions contain information on how to install and operate a B90 safety guard. The installation, operation and servicing of a construction-site circular saw and the corresponding safety provisions are not covered by these instructions. Please consult the documentation that was supplied with your construction-site circular saw for this information.

## 1.11 Dealing with residual hazards

There are hazards associated with the use of technical products. Hazards that cannot be eliminated either by design measures or by protective devices are known as residual hazards.

Should additional hazards and risks become apparent during operation, the following measure is necessary:

- **the operator is obliged to report these to Suva promptly.**

## 1.12 Reporting modifications

Personal injury or damage to machinery can be caused by attachments and modifications.

Written permission from Suva is required for attachments and conversions.

### 1.13 Explanations of the danger levels in the warning notice

The severity of hazards is indicated by signal words and symbols. Safety instructions are classified into danger levels. The danger levels are recognisable to the user by the signal word and the design.

The following warning levels are used:

Signal word and warning level	Meaning
-------------------------------	---------



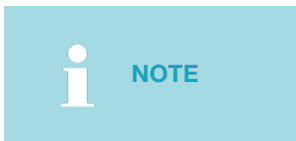
Failure to follow the measures will result in death or serious injury.



Failure to follow the measures may result in death or serious injury.



Failure to follow the measures may result in injury.



Failure to follow the measures may result in material damage.

- Observe warning notices in this document.
- Adapt behaviour to the warnings.

# 2 Installation

## 2.1 Introduction

This section contains information on how to install a B90 safety guard. Always read the following tips before starting any installation work:



**DANGER**  
from incorrect installation work

**Incorrect installation can result in serious injury or death.**

- The machine must be at a standstill before installation work is carried out! (Switch off at the main switch!)
- Also secure the saw to prevent it from being switched on accidentally!

## 2.2 Check the supplied items

Please check the items supplied before fitting the B90 safety guard to your saw.

The following components are supplied:

- B90 safety guard complete, incl. clamping block (version with or without dust extraction socket)
- Tubular stand (specific to machine)
- Attachment screws (specific to machine)
- Assembly drawing

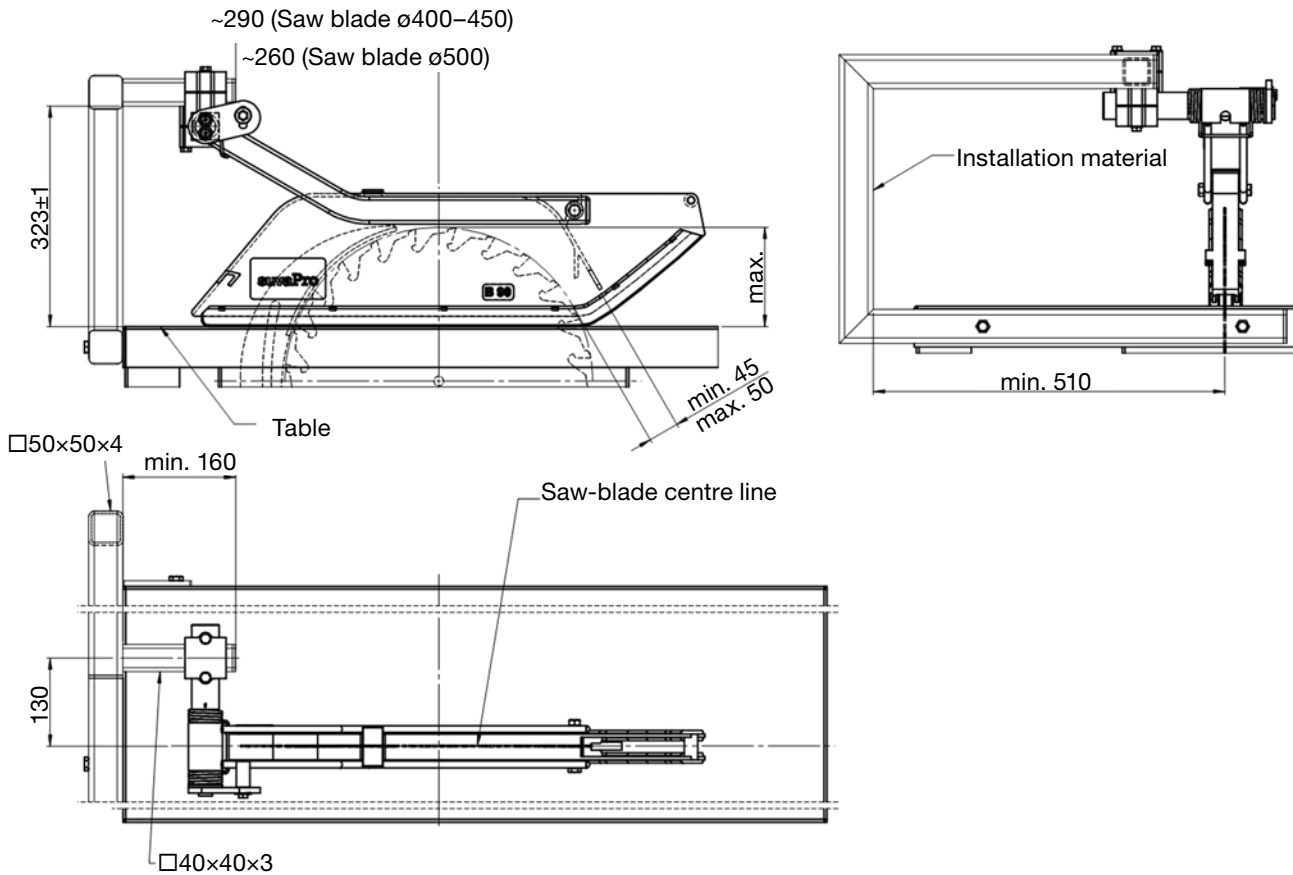
## 2.3 Installation options

A B90 safety guard can be fitted to all standard construction-site circular saws except for those able to tilt the blade.

Depending on the type of saw concerned, there are two ways in which the guard can be fitted:

- Installation using a tubular stand made and fitted by the user.
- Installation using the tubular stand supplied.

## 2.4 Installing the tubular stand

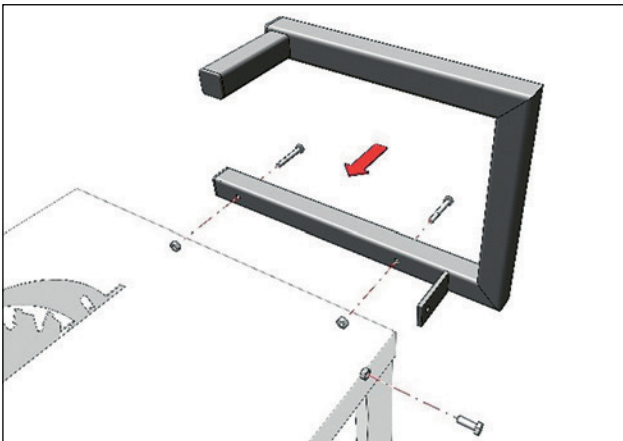


Please adhere to the dimensions specified to ensure your safety guard is correctly positioned.

**The recommended method of installation is to attach the tubular stand to the edge of the saw table.**

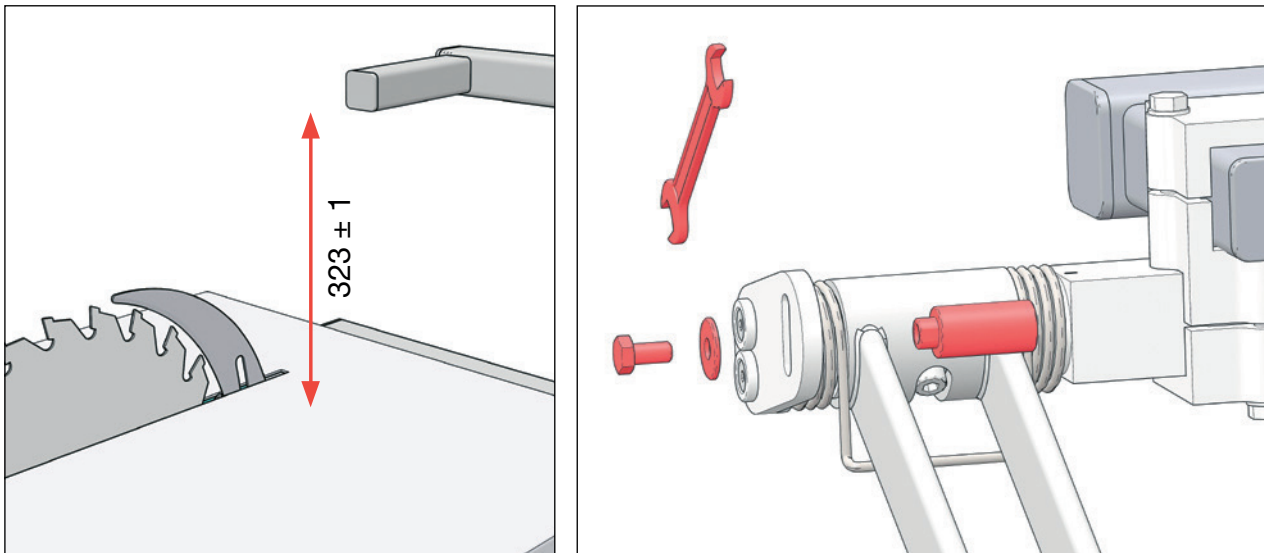
On some construction-site circular saw models, a support plate has to be welded onto the saw. Please refer to the assembly drawing supplied for further details.

- Take the tubular stand and clamp it to the edge of the saw table as shown on the assembly drawing.
- Drill the attachment holes using the existing holes in the tubular stand as a template.
- Fit the tubular stand to the saw table using the screws supplied.

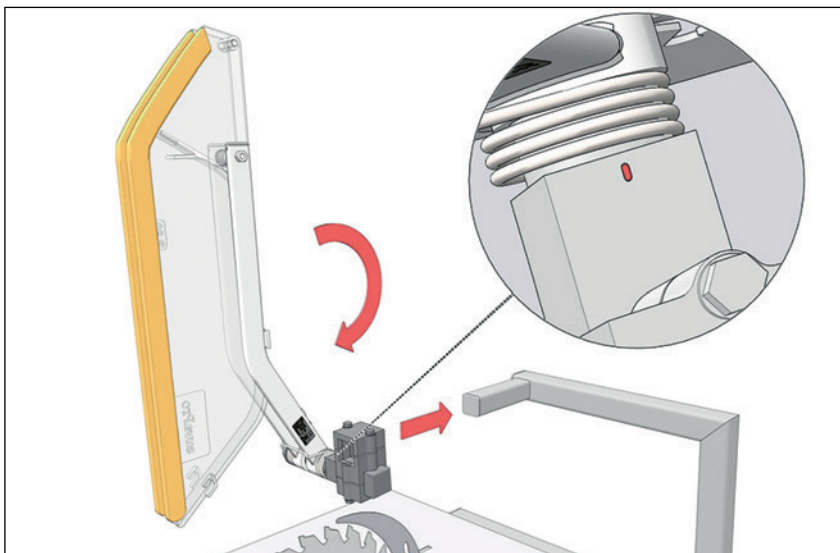


## 2.5 Installing the safety guard

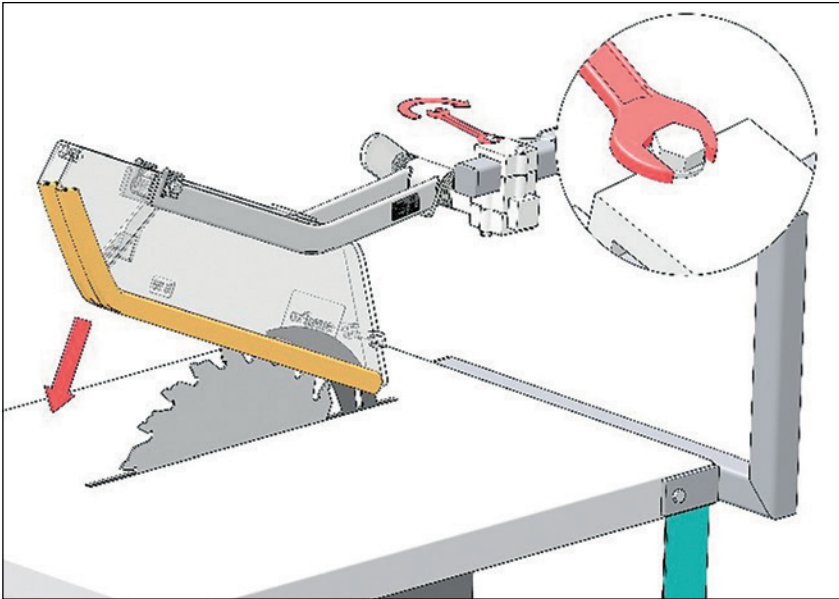
- Check the distance from the saw table to the lower edge of the square tube (40 x 40 mm) on the tubular stand. This dimension must be  $323 \pm 1$  mm if the safety guard is to operate correctly.
- Use an open-ended spanner to release the hexagon head bolt on the height limiter.
- Remove the hexagon head bolt, washer and pivot pin.  
**Keep the parts ready in a safe place for later access.**



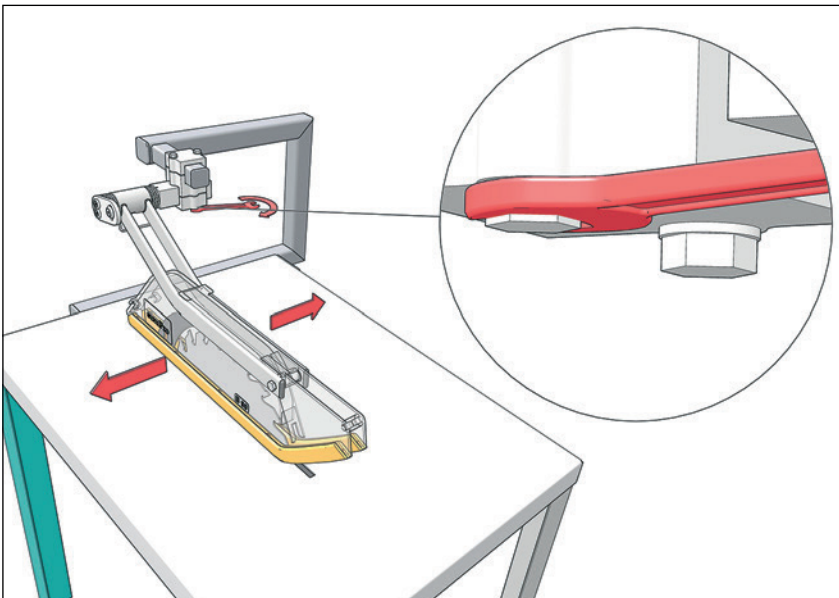
- Take the safety guard and hold it so that the marker is at the top.
- Slide the guard, together with the upper part of the clamping block, onto the square tube.



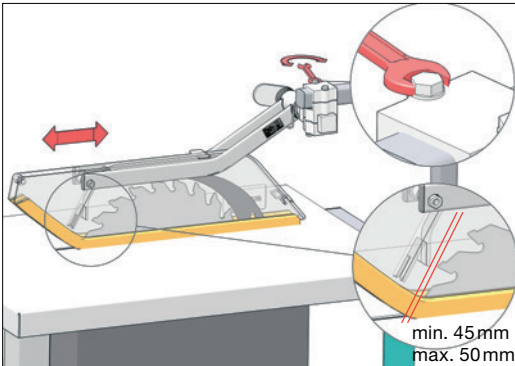
- Temporarily tighten the two hexagon head bolts of the upper part of the clamping block using an open-ended spanner.
- Lower the safety guard onto the saw table.



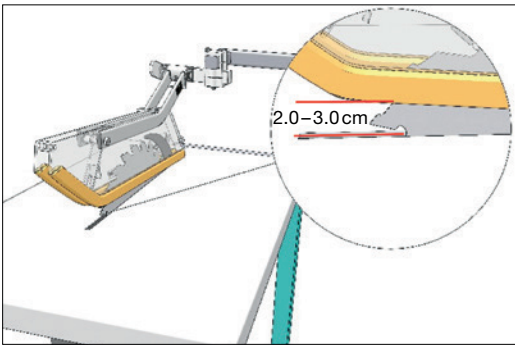
- Release the two hexagon head bolts in the lower part of the clamping block.
- Adjust the position of the square spigot mounted on the safety guard, ensuring that the saw blade is located on the centre line of the safety guard aperture. Retighten the two hexagon head bolts in the lower part of the clamping block.



- Release the two hexagon head bolts in the upper part of the clamping block. Adjust the position of the safety guard longitudinally, ensuring that the dimension (min. 45 mm, max. 50 mm) is maintained.
- Retighten the two hexagon head bolts in the upper part of the clamping block.



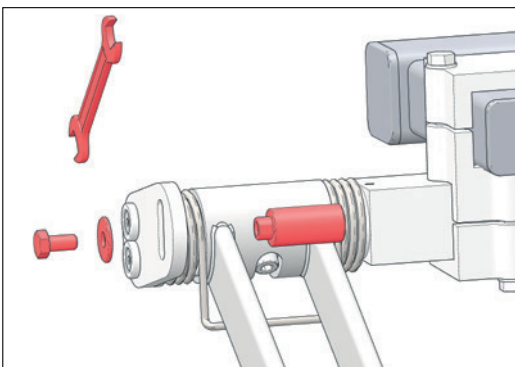
- Check that the safety guard operates correctly. To do this, raise the safety guard by approx. 2 to 3 cm and release it. The safety guard must lower itself automatically into the safe position.



**NOTE**  
**Downward pressure**

If the safety guard fails to lower itself to the safe position, you must increase the pressure on the safety guard (see section 2.5.1).

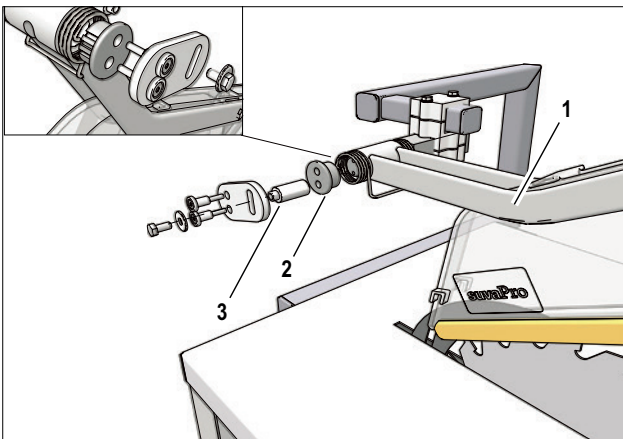
- Insert the stop pin into the guide for the plate in the height limiter and hold it there.
- Mount the hexagon head bolt with the washer in the pivot pin.
- Position the pivot pin so that it rests on the support arm.
- Now use an open-ended spanner to lightly tighten the hexagon head bolt.



### 2.5.1 Increasing downward pressure

In both the pivot pin and the end cap, there are three grooves in which the spring can be positioned. To increase the downward pressure, simply relocate the spring to the next position higher up.

- Remove the pivot pins from the height limiter.
- To relocate the spring, raise the guard until the support arm is at an angle of approx. 45 degrees (this will relieve any tension of the spring).
- Remove the two screws from the height limiter and the height limiter plate.
- Pull the end cap a little away from the spring and relocate the spring in the end cap in the next groove higher up.
- Reattach the height limiter plate and the end cap with the two screws. Mount the pivot pin on the height limiter with the screw and washer.

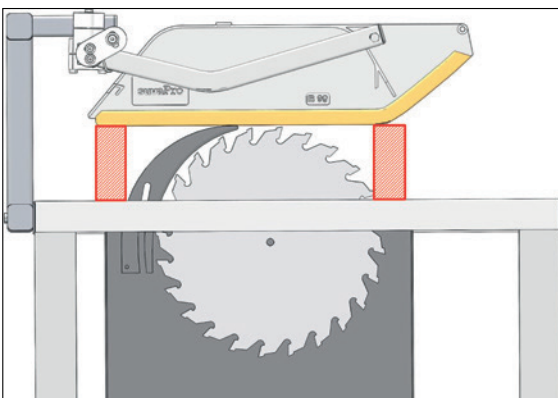


1 Support arm 2 End cap 3 Pivot pin

Check that the safety guard operates correctly. To do this, raise the safety guard by approx. 2 to 3 cm and release it. The safety guard must lower itself automatically into the safe position.

### 2.5.2 Setting the height limiter

- Move the max. permissible saw blade to the uppermost position (see machine manufacturer's instructions).
- Measure the height from the table level to the top edge of the max. permissible saw blade in the uppermost position.
- Cut two squared timbers (5 mm higher than the measured value).



#### NOTE Height setting

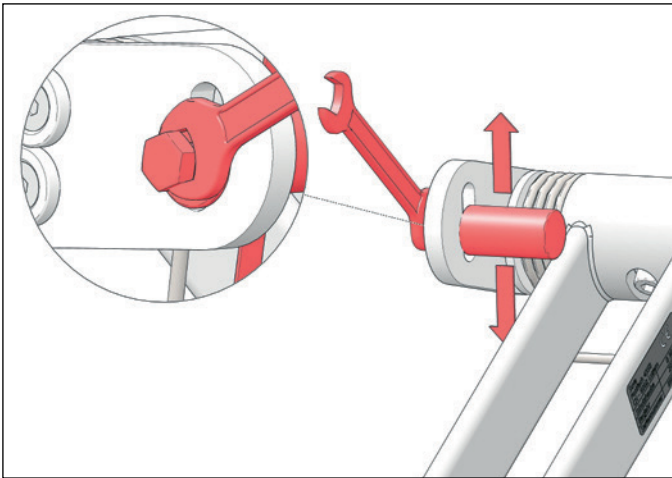
The height setting may vary depending on the machine and the diameter of the maximum permitted circular saw blade (see machine manufacturer's instructions).

- Now place the prepared, squared timbers at the front and back under the rails of the safety guard.
- Insert the stop pin into the guide for the plate in the height limiter and hold it there.
- Mount the hexagon head bolt with the washer in the pivot pin.
- Position the pivot pin so that it rests on the support arm.
- Use the open-ended spanner to tighten the hexagon head bolt.
- Remove the squared timbers and all material from the circular saw table.



**NOTE**  
**Readjustment**

To achieve the required distance between the circular saw blade and the safety guard, it may be necessary to readjust the height of the pivot pin.



# 3 Working with a B90 safety guard

## 3.1 Safety Information

Strict adherence to the following information will enable you to work safely and correctly with a B90 safety guard.



**DANGER**  
if used incorrectly

**Incorrect use can result in serious injury or death.**

- Setting-up work must always be carried out with the saw switched off and the saw blade at a standstill. Also secure the saw to prevent it from being switched on accidentally!
- Please take note of and follow all safety information

given in the instructions supplied with your circular saw.

- The B90 safety guard may only be operated by qualified persons who are familiar with woodwork- ing and with the circular saw and who have received appropriate instruction.
- Before switching on the machine, always check that the saw blade is free to rotate without touching the safety guard.

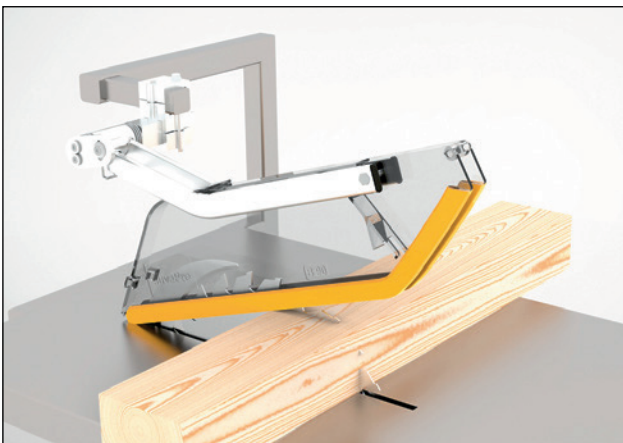
## 3.2 Using the safety guard

This section contains information on the basic use of the B90 safety guard and a description of the most important oper- ating elements.

A B90 safety guard prevents the user of the saw from inadvertently touching the saw blade.

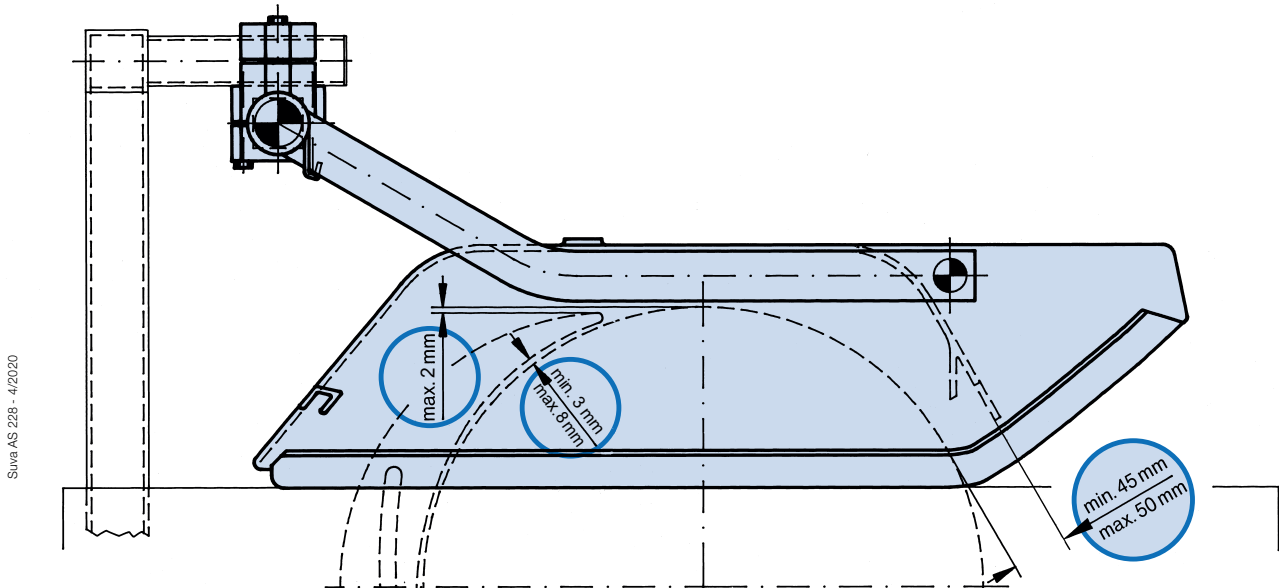
After being raised by the workpiece, the B90 then lowers itself again into the safe position. The guard offers an unob- structed view of the saw cut.

If the model with a dust extraction socket is used and if it is connected to a dust extraction unit, the safety guard will also offer protection from dust and flying pieces of wood.

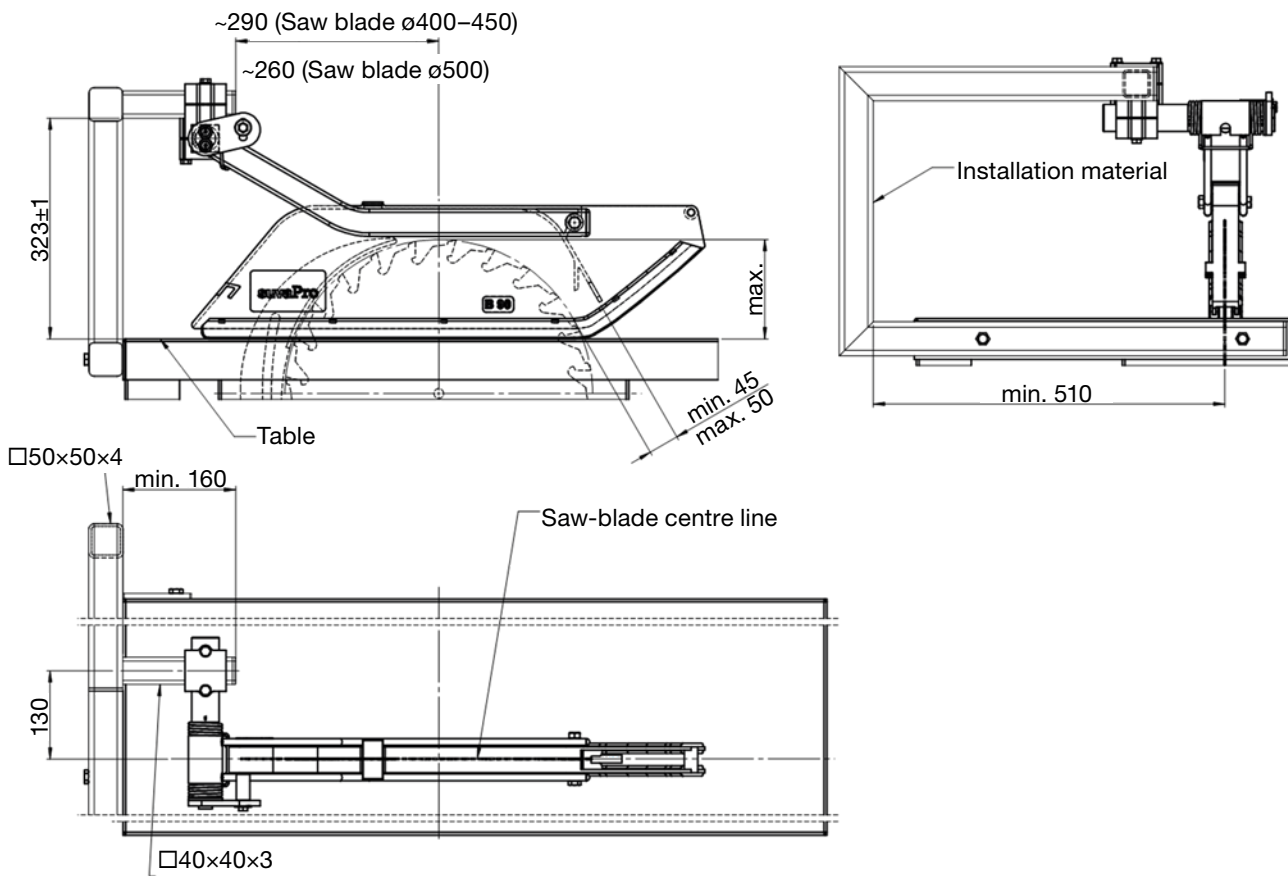


### 3.2.1 Setting the riving knife and the safety guard

#### Riving knife



#### Safety guard

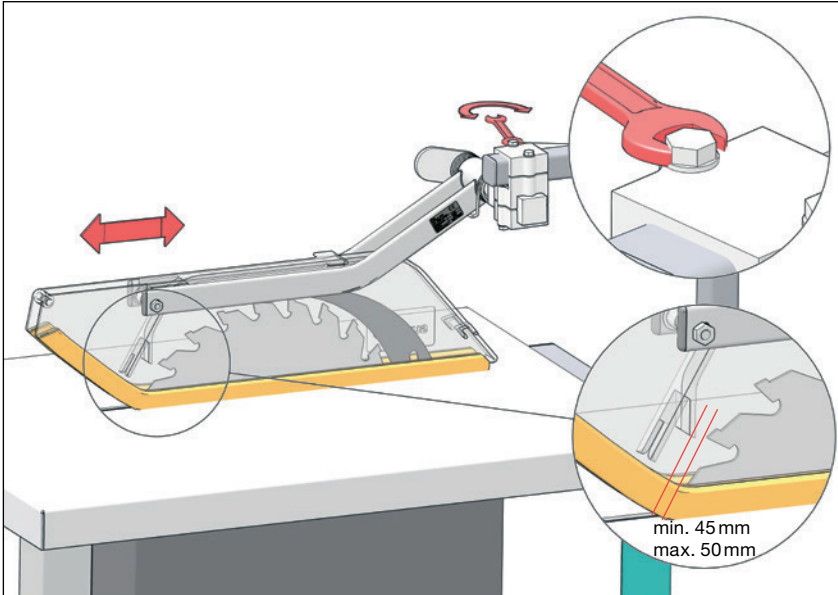


**NOTE**  
Observe dimensional drawing

Read the setting values from the dimensional drawing.

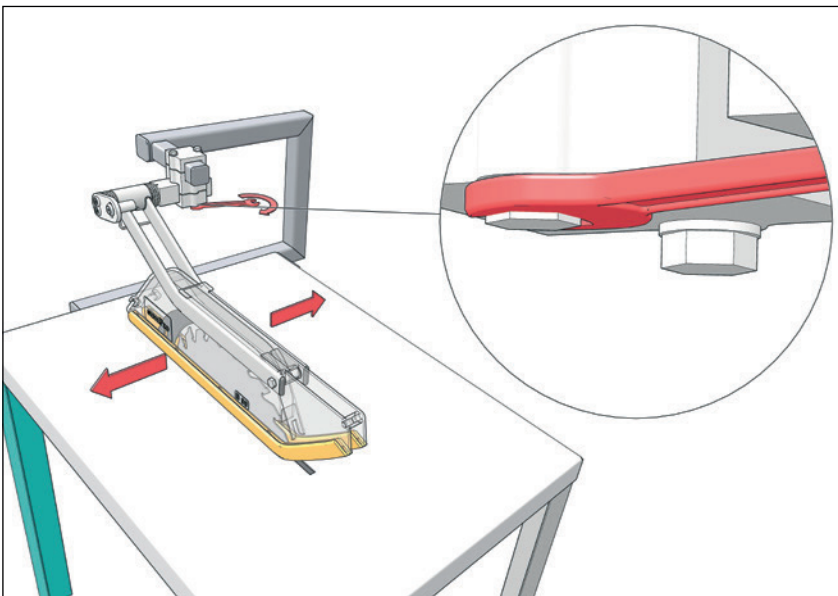
### Moving the safety guard longitudinally

- Release the two hexagon head bolts in the upper part of the clamping block. Adjust the position of the safety guard longitudinally, ensuring that the dimension (min. 45 mm, max. 50 mm) is maintained.
- Retighten the two hexagon head bolts in the upper part of the clamping block.



### Lateral displacement

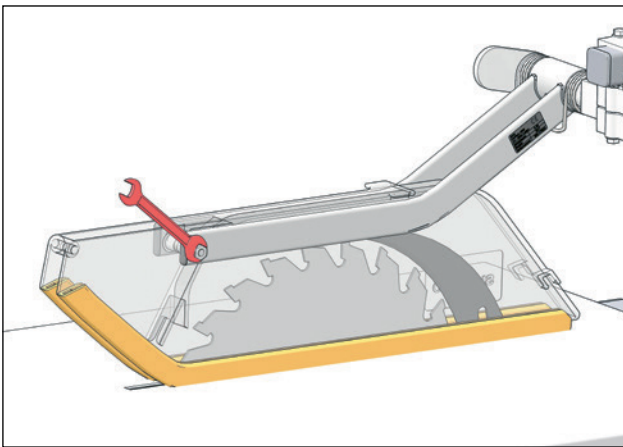
- Release the two hexagon head bolts in the lower part of the clamping block.
- Adjust the position of the square spigot of the safety guard, ensuring that the saw blade is located on the centre line of the safety guard aperture.
- Retighten the two hexagon head bolts in the lower part of the clamping block.



### 3.2.2 Replacing the safety guard

The safety guard must be replaced if it can no longer serve its purpose (e. g. due to heavy wear and tear, broken parts, small cracks, opaqueness, etc.).

- Move the circular saw blade to the lowest position on the machine.
- Release and remove the hexagon head bolt and hexagon nut at the pivot point on the support arm using an open-ended spanner and hold the support arm firmly. The support arm lifts automatically when the safety guard is removed (pretensioned by a torsion spring).
- Remove the safety guard by lifting it over the riving knife and the circular saw blade.
- Take the spacer out of the guide in the safety guard.
- Keep the hexagon head screw, hexagon nut and spacer ready for later access.
- Take the new safety guard and reinsert the spacer.
- Reattach the safety guard with the hexagon head bolt and hexagon nut at the pivot point on the support arm. Tighten the hexagon nut.



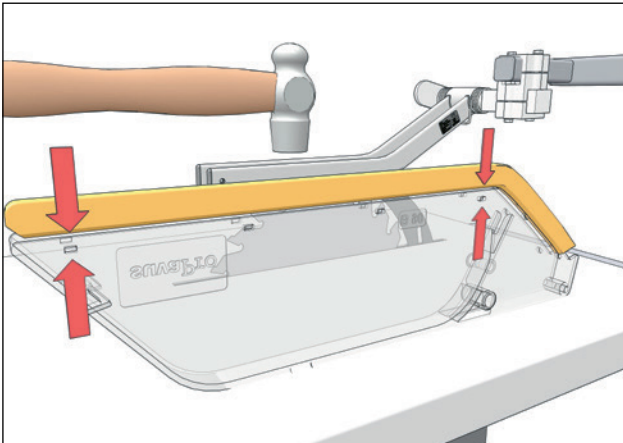
#### CAUTION

Please note that the support arm lifts automatically when the safety guard is removed due to being pretensioned by a torsion spring.

### 3.2.3 Replacing the rails

The rails must be replaced if they no longer serve their purpose (e. g. due to heavy wear and tear or broken parts, or if they no longer grip the safety guard tightly).

- Move the circular saw blade to the lowest position on the machine.
- Release and remove the hexagon head bolt and hexagon nut at the pivot point on the support arm using an open-ended spanner and hold the support arm firmly. The support arm lifts automatically when the safety guard is removed (pretensioned by a torsion spring).
- Remove the safety guard by lifting it over the riving knife and the circular saw blade.
- Take the spacer out of the guide in the safety guard.
- Keep the hexagon head screw, hexagon nut and spacer ready for later access.
- Use a screwdriver to prise the rails off the disassembled safety guard.
- Position the new rail on the safety guard, ensuring that the markings line up.
- Using a hammer, tap the rail gently into position on the safety guard. Replace the spacer in the safety guard.
- Reattach the safety guard with the hexagon head bolt and hexagon nut at the pivot point on the support arm. Tighten the hexagon nut.



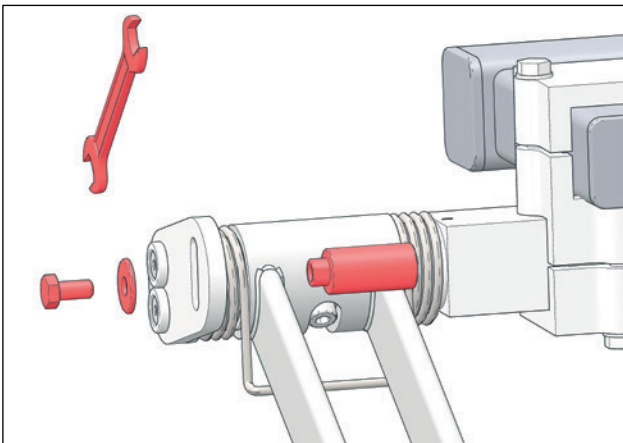
**CAUTION**

Please note that the support arm lifts automatically when the safety guard is removed due to being pre-tensioned by a torsion spring.

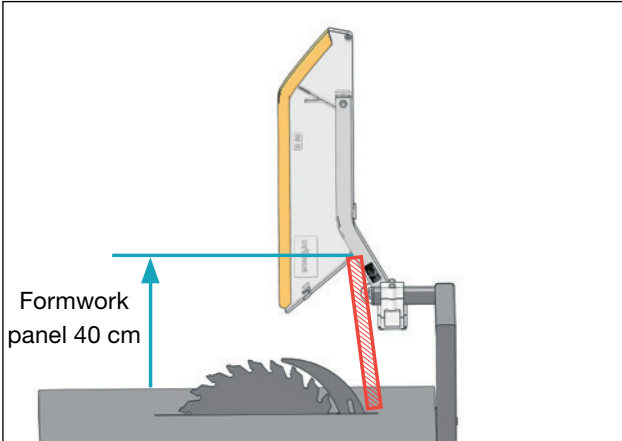
**3.2.4 Replacing the saw blade and the riving knife**

Depending on the design and type of the construction site circular saw, it may be necessary to remove the height limiter pin in order to change the circular saw blade.

- Use an open-ended spanner to release the hexagon head bolt on the height limiter.
- Remove the hexagon head bolt, washer and pivot pin.
- **Keep the parts in a safe place for later access.**



- The safety guard must be locked in its uppermost position when changing the saw blade and the riving knife.
- After the change, remove the device which locked the safety guard in its uppermost position and lower the safety guard to its resting position on the table.
- Fit and adjust the height setting pins (see section 2.5.2).



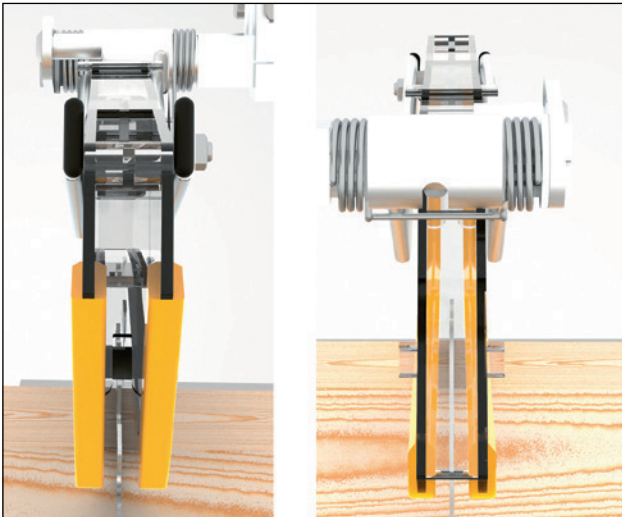
**NOTE**  
**Readjustment**

To achieve the required distance between the circular saw blade and the safety guard, it may be necessary to readjust the height of the pivot pin.

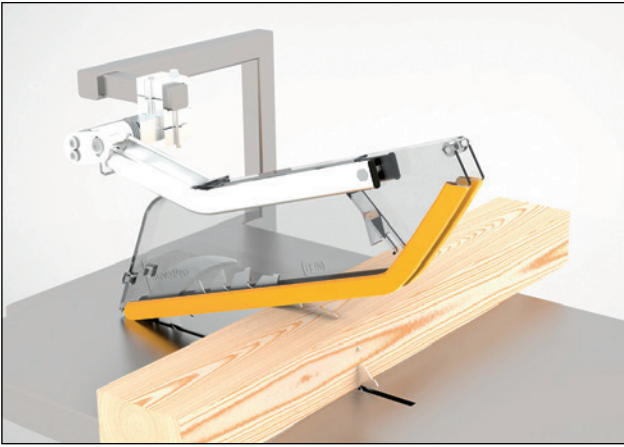
- Remove all materials from the saw table.

### 3.2.5 Cutting workpieces

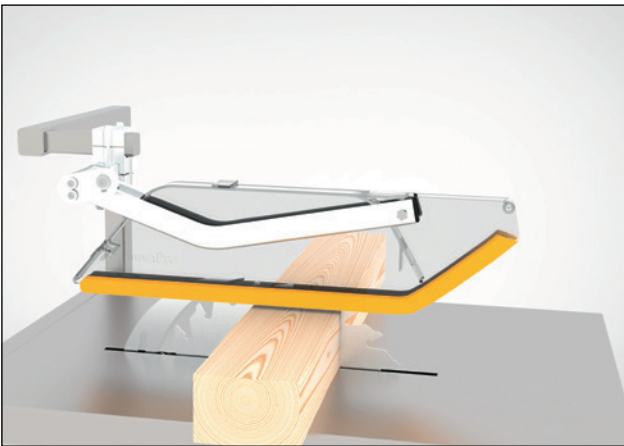
The safety guard gives the operator an unrestricted view of the saw blade. Proceed as follows when cutting workpieces:



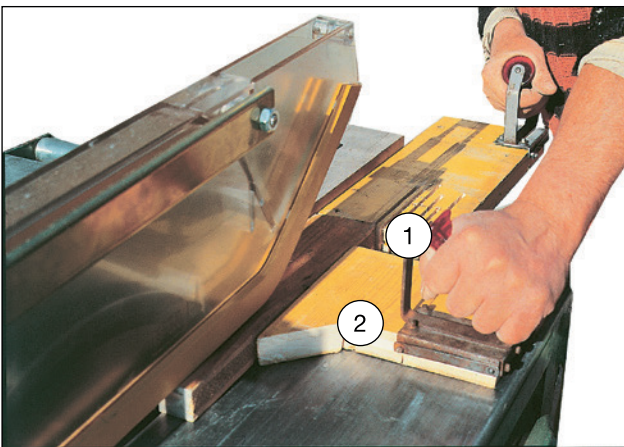
- Slide the workpiece up to the safety guard.
- Slide the workpiece further forward so that the safety guard is raised by the workpiece.



- Continue to push the workpiece until the safety guard returns of its own accord to the safe position.



- Always use a longitudinal pusher (1) when pushing narrow workpieces and a side pusher (2) to guide workpieces along the fence.



- Always use the tip of the side pusher to remove narrow strips of waste from the immediate area of the saw blade.



**DANGER**  
**Working on a rotating saw blade**

**Working on a rotating saw blade can result in serious injury or death.**

- Always use a longitudinal pusher (1) when pushing narrow workpieces and a side pusher (2) to guide workpieces along the fence.
- Always use the tip of the side pusher to remove narrow strips of waste from the immediate area of the saw blade.

# 4 Cleaning

The safety guard is of robust construction and requires a minimum of maintenance. Regular cleaning will ensure its functional safety and will also maintain the value of this safety device.

## 4.1 Important notices

Please take note of the following notices when cleaning the safety device:



**DANGER**  
Do not carry out cleaning work while machine is switched on

**Cleaning with the machine switched on can result in serious injury or death.**

- Always switch off the saw at the main switch before carrying out any cleaning work.
- Secure the machine to prevent it from being switched on inadvertently.



**WARNING**  
Safety guard scratched or opaque

**If the safety guard is scratched or opaque, the view of the saw blade and workpiece will be obscured. This can lead to serious injury or death.**

- Only use a standard, mild cleaning agent to clean dirty areas.
- Do not use any abrasive cleaners or cleaners containing solvents.
- Scouring pads or steel wool are unsuitable for cleaning as they will scratch the surface.

## 4.2 Cleaning work

The following information contains details of how to clean the safety device and individual parts of the safety device that must be cleaned regularly.



**WARNING**  
Safety guard scratched or opaque

**If the safety guard is scratched or opaque, the view of the saw blade and workpiece will be obscured. This can lead to serious injury or death.**

- Remove all waste material at regular intervals. In particular, always keep the transparent guard clean.
- Regularly clean the transparent safety guard to ensure that a clear view is not obstructed by dirt.



**NOTE**  
Safety guard scratched or opaque

Clean the surfaces of the safety guard with a soft, lint-free cloth whenever required.

# 5 Periodic inspection

## 5.1 Important notices

Please observe the following instructions when carrying out periodic inspections of the safety device:



**DANGER**  
Do not carry out work while machine is switched on

**Working with the machine switched on can result in serious injury or death.**

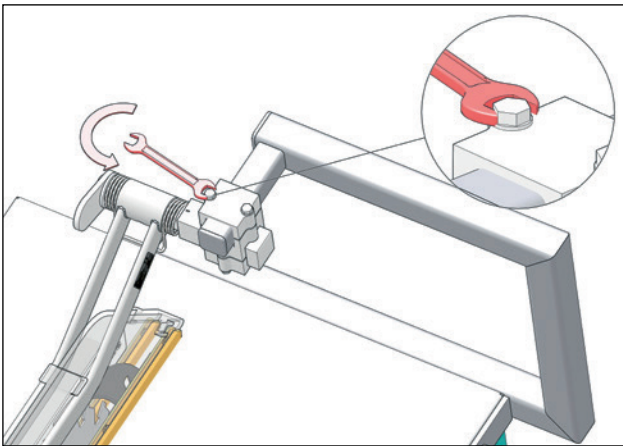
- Always switch off the saw at the main switch before carrying out any work.
- Secure the machine to prevent it from being switched on inadvertently.

## 5.2 Inspection interval

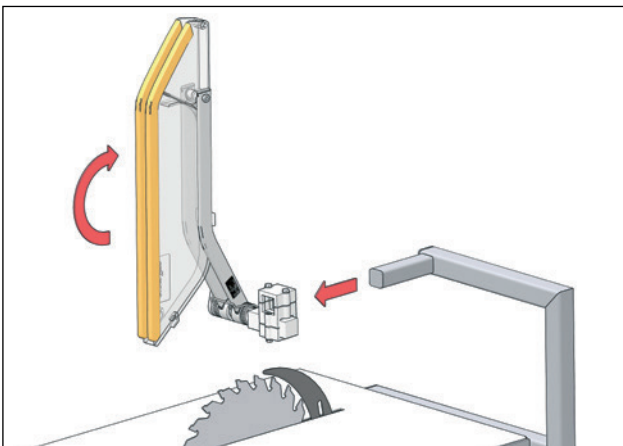
<b>Components</b>	<b>Interval</b> Operating hours	<b>Description of activity</b> Notes on auxiliary agents, cleaning agents and lubricants	<b>Who?</b> Qualification
Cleaning (section 4.0)	8h	<ul style="list-style-type: none"><li>• Visual inspection; clean with hand brush if necessary (use gloves)!</li></ul>	Operator
Set height limit (section 2.5.2)	8h	<ul style="list-style-type: none"><li>• Visual inspection; readjust if necessary (use gloves)!</li></ul>	Operator
Entire safety guard	8h	<ul style="list-style-type: none"><li>• Check functioning and correct installation and settings.</li><li>• Visual inspection for wear and tear, broken pieces, small cracks, opaqueness, etc.; replace the safety guard if necessary</li></ul>	Operator
Check all screws	8h	<ul style="list-style-type: none"><li>• Visual inspection; tighten or replace (use gloves)!</li></ul>	Operator

# 6 Disassembly

- Release the two hex. head bolts in the upper part of the clamping block to disassemble the B90 safety guard.



- Remove the hex. head bolt, washer and height setting pin.
- Keep the parts in a safe place for later access.
- Then remove the safety guard from the tubular stand by pulling the safety guard with the clamping block off the square part of the tubular stand.



**CAUTION**  
Relieve tension on torsion spring

Please note that the clamping piece and the safety guard support arm are pretensioned with a torsion spring for weight relief purposes. For this reason, it is essential to pull the safety guard off the square part only when the guard is in the vertical position (when not under tension).

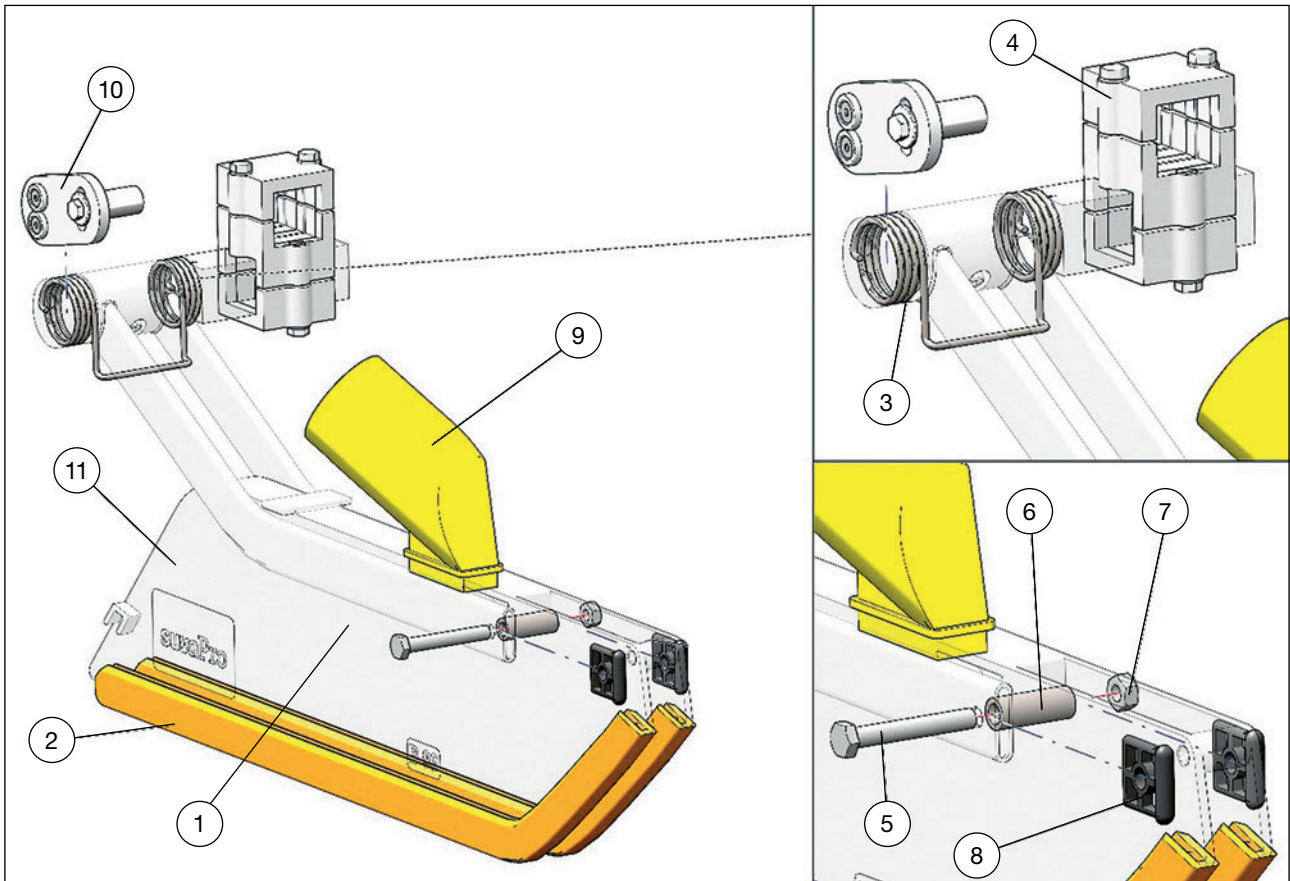
# 7 Spare parts

The following spare parts for the B90 safety guard can be ordered from your supplier.

For inquiries please quote the serial number, which is located on the type plate on the support arm.



Item	Designation	Article no.
1	B90 safety guard, incl. flanged bushes and rails	328
	B90 safety guard, with suction socket, incl. 2 flanged bushes and rails	14993
2	Rail	13
3	Twin torsion spring	294
4	Clamping block	846
5	Hex. head bolt, M10x70/26	1359
6	Spacer	739
7	Hexagon nut, M10x0.8 pitc	1474
8	Endplug for conduit piping	30694
9	Dust extraction socket for B90 safety guard, article no. 14993	12344
10	Height limiting set	47165



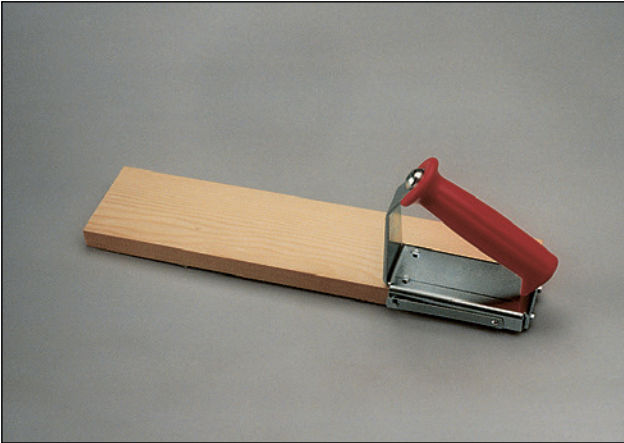
## 7.1 Accessories

Pushers often have to be replaced. Suva handles can be attached to and removed from pushers without the need for any tools. They fit all pushers and ensure safe and economical working.

### Pusher handles (indispensable protection)

Handles for machines on which the rip fence (viewed from the feed side) is located to the right of the workpiece.

- Article no. 9336, for use when the fence is on the right (standard version)

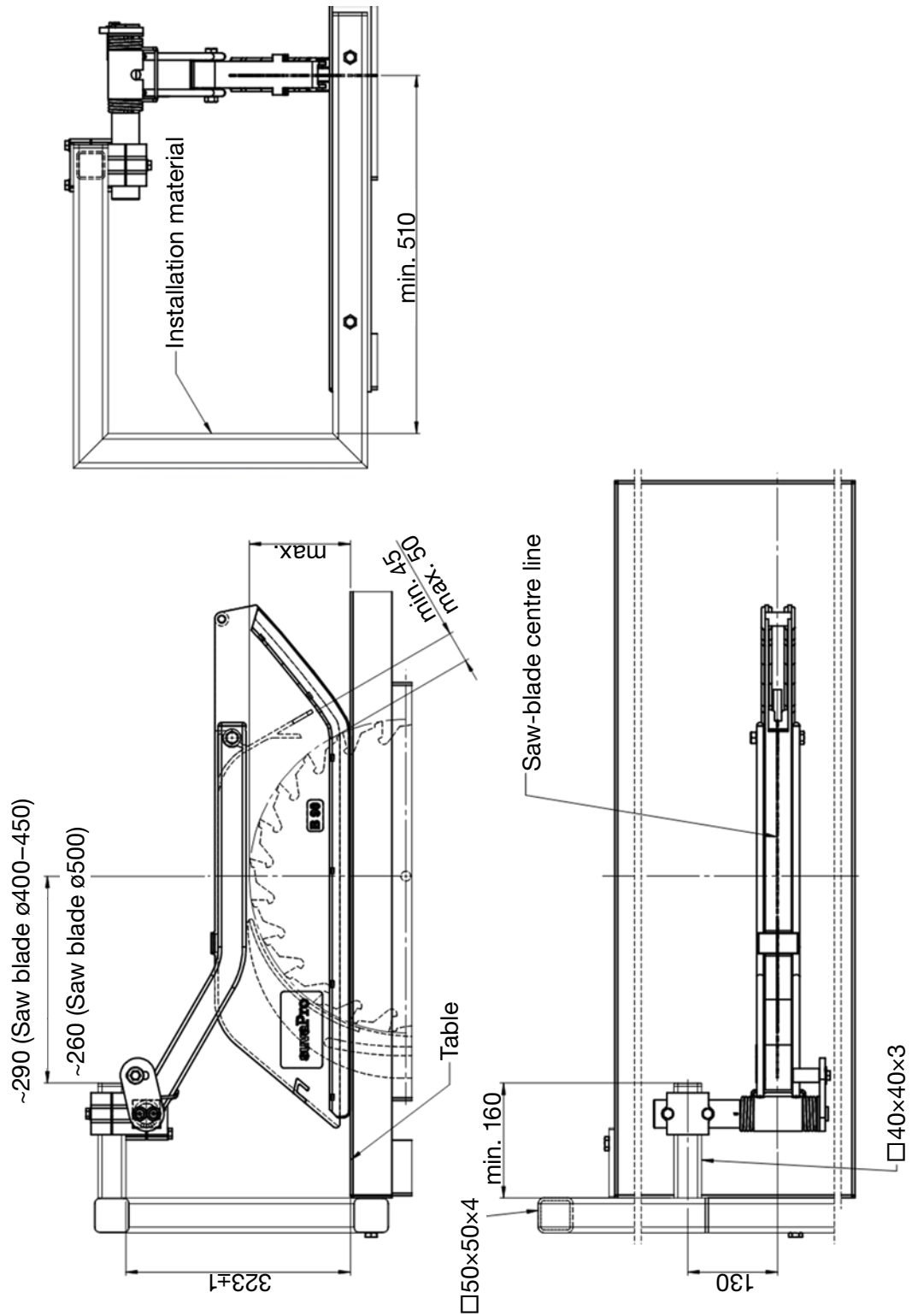


### Spiked screws for new handles

- Article no. 9327



# 8 Dimensional drawing



## 8.1 Specifications

### **B90 complete Safety Guard**

Length	770 mm
Width	375 mm
Height	240 mm
Weight	6.2 kg
Space requirements	0.069 m <sup>3</sup>

# EC Declaration of Conformity

## (Original EC Declaration of Conformity)

within the meaning of the EC Machinery Directive 2006 / 42 / EC and the associated amendments. Safety component pursuant to Article 2(c)

We declare that the safety component

### **Protective hood B 90**

Serial number: from B90-260001 to 260500  
(Note: the digits "26" refer to the current year)

complies with the provisions of the above-mentioned EC Machinery Directive (essential health and safety requirements).

The protective hood B 90 is a self-closing device for covering the saw blade (max. Ø 500 mm) on construction site circular saw machines. The protective hood B 90 must be installed in accordance with the instructions in the operating manual and the assembly drawing.

Applied harmonised standards:

Safety of woodworking machines – Bench circular saws (with and without sliding table), EN ISO 19085-9:2019

Responsible for compiling the technical documentation in accordance with Annex VII A of Directive 2006/42/EC:

Meyer BlechTechnik AG  
Schutztechnik  
Feldstrasse 30  
CH-6022 Grosswangen



Erich Meyer, Management

Grosswangen, 21.11.2025



